

# Secure-Com<sup>GPRS</sup>

SECURE COMMUNICATIONS

**Have the ultimate in high security alarm communication for your business and residential property.**

When using a GPRS system such as Secure-Com, you can have greater confidence in your alarm system. Fully redundant five Path IP GPRS ensures all signals are received every time. In case of a GPRS failure all signals will be sent via SMS in raw data form to the control room with a GPRS fail signal and all other data follows.



Burglars are becoming more intelligent every day which means cutting the phone line is now the first thing they consider when trying to gain access to your premises. A cut phone line means no signal can be sent to the control room which renders the communications of your alarm ineffective.

## Why use a Polled system?

Secure-Com when used in a monitored premises, reports to a monitoring station on a regular basis (e.g. every 90 seconds) and receives an acknowledgment from the control room to state the unit is online. With a polled system the consumer can be sure that the unit is effectively working and has not been tampered with.

## Reduce your Phone Bill

By using Secure-Com not only do you get the most secure alarm communication but you can also reduce your phone bill. The average commercial alarm sends a minimum of 3 signals a day. However, this depends on how many times you arm or disarm the alarm, this is not including how many times your security system is activated. Therefore on average an owner previously using a telephone line, should be expecting to save around \$300 to \$500 per year, on the basis that between 5 to 9 signals can be sent per day.

As more and more households and business's are switching to VOIP or doing away with the phone line all together Secure-Com is the perfect solution. Ideal for holiday homes, building sites and sites where phone lines are not available.

RadioNet Monitoring specialise in wireless communication for the security and fire industry, why not use the best.

**RadioNet  
Monitoring  
Leaders in alarm  
Communication**

**Up to 6 reporting Paths.  
GPRS IP 1-5, SMS raw  
data**

**Secure transmission of  
alarms**

**All communications are  
acknowledged , Alarms,  
system faults, polls**

**SMS Raw data  
redundancy**

**Compatible with all  
Contact ID alarms**

**Monitored Serial Port  
connection on Paradox  
and Texecom Panels**

**Signal Strength  
Monitored**



**www.secure-com.com.au  
info@secure-com.com.au  
Ph: 08 94151331**

**For more information about our GPRS range please go  
to our web site or call 08 9415 1331**

© 2009 Copyright RadioNet Monitoring Australia pty ltd

**RadioNet Monitoring**  
Security that talks when your phone line can't

**RadioNet  
Monitoring  
Leaders in alarm  
Communication**

**Always online  
monitoring**

**Remote software  
upgradable**

**Dedicated duplicate  
network**

**Encrypted  
communications better  
than 256 bit AES**

# Secure-Com<sup>GPRS</sup>

## SECURE COMMUNICATIONS

The Secure-Com unit has SMS functionality built in and can be used as a stand alone alarm. Seven inputs and two switchable relays that can be configured to be a siren and strobe also they can be remotely triggered by SMS commands. The unit can be used to turn on pumps, open gates and switch on alarm systems. When in SMS mode for non back-to base alarms. The unit can send up to 64 custom txt zones, 32 user codes and all Contact ID events via SMS direct to multiple customers mobile phones.

### What are the benefits of Secure-Com?

- Cost effective, no phone calls
- The Secure-Com unit runs on RadioNet Monitoring's own GPRS VPN Network in conjunction with the Vodafone Network.
- All communications are acknowledged; Alarms, system faults and polls.
- Multiple Communication Paths.
- In the event that the primary communications path is unavailable, Secure-Com selects an alternative communications path for transmission.

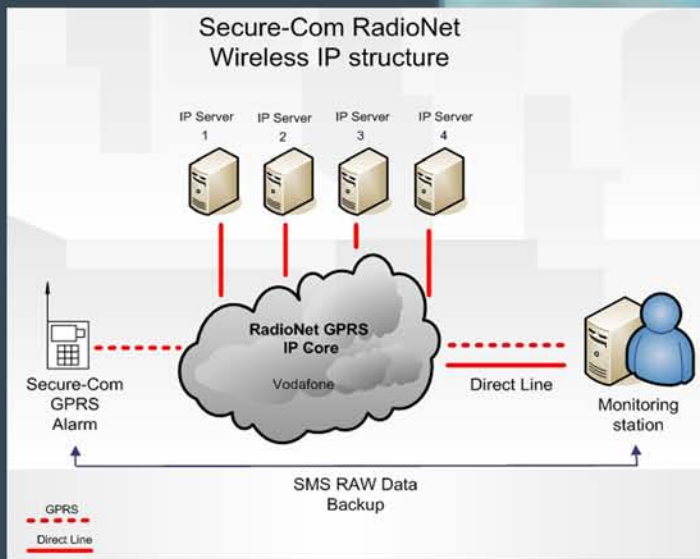
### Signal Strength Monitored

Signal strength on all Secure-Com units are monitored for signal strength and if it drops below a certain signal, a report can be sent to the bureau as well as all signal strength can be sent to the control room in Contact ID form at certain timed intervals

### Duplicate Redundant multiple IP Servers

If there is a network error, then the Secure-Com will alternately use one of five IP servers. This allows fail safe network redundancy, so the signals will always get through. If the GPRS network is unavailable the unit will send data via the RAW data SMS service.

**RadioNet Monitoring offers a high integrity wireless network for monitoring throughout 98 % of the Australian population.**



**Secure-Com is  
designed to meet the  
new standard  
AS/NZ2201:5 - 2008**



**www.secure-com.com.au  
info@secure-com.com.au  
Ph: 08 9415 1331**

The Secure-Com can be connected via a serial cable to certain panels which allow for very quick programming of alarm systems and a monitored data link between the Secure-Com and alarm panel. The CMS will know if the GPRS unit has been unplugged from the alarm panel.

The Secure-Com uses the GPRS Vodafone network for all primary communications. If a total network failure occurs, the unit will use SMS raw data redundancy as a backup until GPRS services are back online.

**Ask your Monitoring Station or Installer now if they use the  
RadioNet Monitoring range of wireless products.**